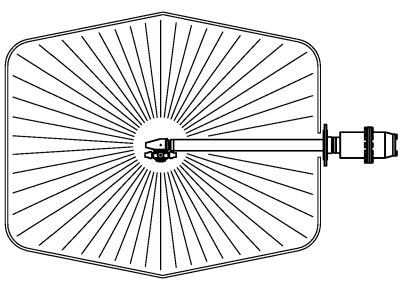
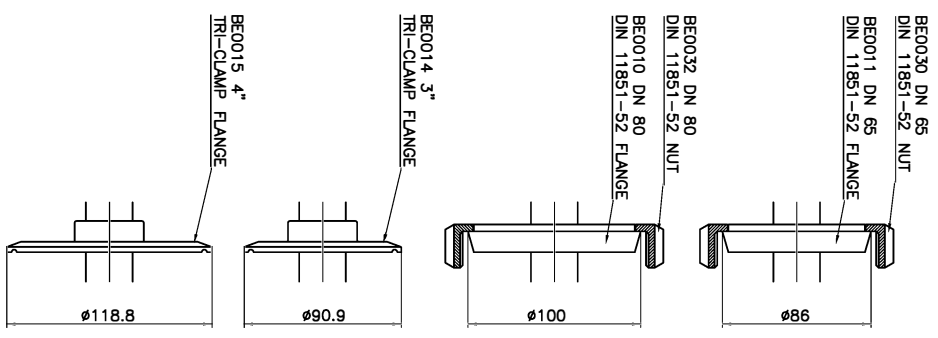
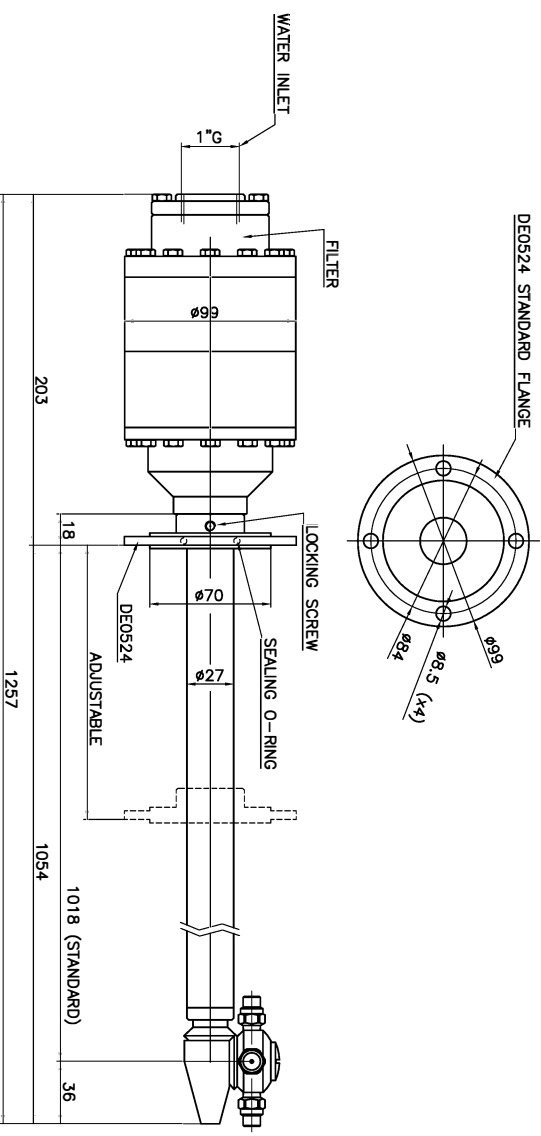


TECHNICAL DATA	
O-RING	NBR - EPDM - VITON
SLIPPER	PTFE+CARBON FIBRE
BUSHING	ASI 316
FILTER	700 MICRON
NOZZLES POSITIONS	2 - 4
NOZZLES THREAD	1/8"NPT
TESTING NOZZLES	0 x 0000
OPERATING FLOW RANGE	10 - 60 L/min
TESTING FLOW	00 L/min
OPERATING PRESSURE RANGE	0 - 200 bar
TESTING PRESSURE	000 bar
CENTER LINE MIN PASS THROUGH HOLE	95 mm
MANUAL MIN PASS THROUGH HOLE	76 mm
PIPE LENGHT	1018 mm (STANDARD)
MAX OPERATING TEMPERATURE	90 °C
MATERIAL	INOX AISI 316
CONICAL GEARS	FIXED Z=29 ROTATING Z=31
ROTATION SPEED RANGE	15 TO 25 RPM
FULL CYCLE	31 ROTATIONS
FULL CYCLE TIME	1.5 min AT 20 RPM



RUGOSITA' (UNI 4600)	MODIFICA	1	2	3	4	5
GREZZO	FOGLIO	XXXX				
~ = ∅	DATA	XX.XX.XX				
SGROSS. 3/2	TOLLERANZE GENERALI	dissse m UNI-EN 22768/1				
∇ = 3/2	±0.1	±0.2	±0.3	±0.5	±0.8	±1.2
FINITURA 1/g	NOTE:					
∇∇ = 1/g	DESCRIZIONE:	XC 061 AAH APPLICATION DRAWING				
∇∇∇ = 0/g	RETTIFICA					
	CODICE:	XC 061 AAH				
	SCALA	1:3 A3 O				
	DISIGN.: CR ICONTR.: DM					
	MONTECCHIO E. (RE) - ITALY					
	DATA: 02.10.08 MOD.					